

FITFLEET-EXCAVATOR-250HR-CVA

PM Checklist

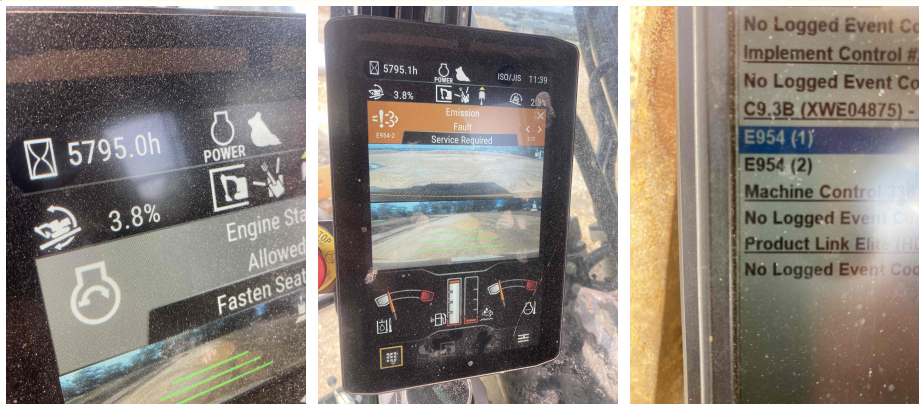
● 0 ● 0 ● 97 ● 8

| | | | |
|-------------------|---|------------------|---|
| Inspection Number | 21321234 | Customer No | 2969824372 |
| Serial Number | HDF00140 | Customer Name | AUSTRALIAN HAMMER SUPPLIES HIRE PTY LTD |
| Make | CATERPILLAR | Customer Email | hirebookings2@hammer hire.com.au |
| Model | 336 | Work Order | sc74466 |
| Equipment Family | Large Hydraulic Excavator | Completed On | 19/02/2025 12:52:43 PM |
| Asset ID | AHSH73 | Inspector | Collin Graham |
| SMU | 5795 Hours | PDF Generated On | 19/02/2025 |
| Location | 270 George St, Box Hill, New South Wales 2765, Australia | Coordinates | 0, 0, 0 |
| Technician |  | | |

General Info & Comments

● General info/Comments NORMAL

Comments: Machine has emissions fault due to dry hire running out of adblue



TASK SAFETY INSTRUCTIONS - Revision Number: 02 Date: 25th September 2023

- 1.1 Wear Correct PPE at all times PASS
- 1.2 All isolation and safe work procedures must be followed PASS
- 1.3 Identify task hazards and controls utilising hierarchy or controls model PASS

| | | |
|---|--|------|
| ● | 1.4 Ensure a competent operator and spotter is utilised to move mobile equipment | PASS |
| ● | 1.5 Ensure all mobile equipment is fundamentally stable | PASS |
| ● | 1.6 Ensure three points of contact is maintained during access and egress | PASS |
| ● | 1.7 Ensure acceptable housekeeping standards are maintained at all times | PASS |

MACHINE GENERAL RUNNING CHECKS

| | | |
|---|---|------|
| ● | 2.1 Check all work lights, beacon & reverse alarm for operation | PASS |
| ● | 2.2 Test all dash warning lights, gauges and audible alarms for correct operation | PASS |
| ● | 2.3 Check idle timer for correct shut down operation | PASS |
| ● | 2.4 Check operation of all three emergency stop buttons | PASS |
| ● | 2.5 Check operation of horn | PASS |
| ● | 2.6 Check operation of reverse camera | PASS |
| ● | 2.7 Check alternator charge voltage - ACTUAL_____V | PASS |
| ● | 2.8 Check operation of auto grease system by manually activating timer | N/A |
| ● | 2.9 Check fire system control panel for 'Normal' | N/A |
| ● | 2.10 Test hydraulic lock out function operation | PASS |
| ● | 2.11 Check window wiper and washer operation | PASS |

PM SAFETY GENERAL INSPECTION

| | | |
|---|--|------|
| ● | 3.1 Visually ensure all guards, shields and covers are in place and in good condition to ensure personal are protected from rotating parts | PASS |
|---|--|------|

| | | |
|---|---|------|
| ● | 3.2 Check condition of machine identification signage | PASS |
|---|---|------|

| | | |
|---|---------------------------------|------|
| ● | 3.3 Inspect ROPS/FOPS condition | PASS |
|---|---------------------------------|------|

PM BRAKING SYSTEM

| | | |
|---|---|------|
| ● | 4.1 Test travel brakes – Ensure the machine comes to a stop when travel controls are released | PASS |
|---|---|------|

| | | |
|---|---|------|
| ● | 4.2 Test travel brakes – Ensure the brakes hold on a suitable slope | PASS |
|---|---|------|

PM FIRE SUPPRESSION SYSTEM

| | | |
|---|--|-----|
| ● | 5.1 Ensure fire suppression bottle and components are securely mounted and in good condition | N/A |
|---|--|-----|

| | | |
|---|--|-----|
| ● | 5.2 Ensure fire suppression is correctly charged | N/A |
|---|--|-----|

| | | |
|---|---|-----|
| ● | 5.3 Inspect last charge date - ACTUAL _____ | N/A |
|---|---|-----|

| | | |
|---|---|------|
| ● | 5.4 Check all fire extinguishers are securely mounted and in good condition | PASS |
|---|---|------|

| | | |
|---|--|------|
| ● | 5.5 Check all fire extinguishers are correctly charged | PASS |
|---|--|------|

| | | |
|---|---|------|
| ● | 5.6 Inspect last charge date - ACTUAL _____ | PASS |
|---|---|------|

PM ENGINE

| | | |
|---|------------------------------|-----|
| ● | 6.1 Perform engine valve set | N/A |
|---|------------------------------|-----|

| | | |
|---|--|------|
| ● | 6.2 Inspect air intake system hoses, pipes, clamps for signs of dirt ingress | PASS |
|---|--|------|

| | | |
|---|--|------|
| ● | 6.3 Inspect engine for oil or fuel leaks | PASS |
|---|--|------|

| | | |
|---|--|------|
| ● | 6.4 Inspect engine components for missing clamps | PASS |
|---|--|------|

| | | |
|---|--|------|
| ● | 6.5 Inspect exhaust system for signs of leaks, loose bolts or missing clamps | PASS |
|---|--|------|

| | | |
|---|--|------|
| ● | 6.6 Inspect turbo for security and signs of leaks | PASS |
| ● | 6.7 Inspect condition of exhaust lagging | PASS |
| ● | 6.8 Inspect engine mounts for condition and loose hardware | PASS |
| ● | 6.9 Inspect alternator mount condition and adjustment | PASS |
| ● | 6.10 Inspect wiring condition and security | PASS |
| ● | 6.11 Inspect engine belts | PASS |

PM ENGINE COOLING SYSTEM

| | | |
|---|--|------|
| ● | 7.1 Check coolant level | PASS |
| ● | 7.2 Check condition of radiator cap | PASS |
| ● | 7.3 Check condition of radiator core | PASS |
| ● | 7.4 Check cooling system for signs of leaks | PASS |
| ● | 7.5 Check hose and clamp condition | PASS |
| ● | 7.6 Inspect fan condition and operation | PASS |
| ● | 7.7 Inspect radiator and fan guard condition | PASS |

PM SWING TRANSMISSION

| | | |
|---|---|------|
| ● | 8.1 Inspect swing transmission for signs of leaks | PASS |
| ● | 8.2 Inspect swing transmission oil level | PASS |

PM HYDRAULIC SYSTEM

| | | |
|---|---|------|
| ● | 9.1 Check hydraulic oil level | PASS |
| ● | 9.2 Inspect hydraulic cylinders for leaks and security | PASS |
| ● | 9.3 Inspect hydraulic hoses for leaks, damage, security | PASS |
| ● | 9.4 Inspect hydraulic pump condition, leaks, security | PASS |
| ● | 9.5 Check Pilot Accumulator operation as per OEM Maintenance Procedure - Test Boom Down Functionality with engine off | PASS |

PM FINAL DRIVES

| | | |
|---|---|------|
| ● | 10.1 Inspect LHS final drive mount condition for leaks and security | PASS |
| ● | 10.2 Inspect LHS oil level and mag plug condition | PASS |
| ● | 10.3 Inspect RHS final drive mount condition for leaks and security | PASS |
| ● | 10.4 Inspect RHS oil level and mag plug condition | PASS |

PM UNDERCARRIAGE

| | | |
|---|---|------|
| ● | 11.1 Inspect LHS track tension | PASS |
| ● | 11.2 Inspect RHS track tension | PASS |
| ● | 11.3 Inspect tracks for loose/missing bolts | PASS |
| ● | 11.4 Inspect load and carrier rollers for signs of leaks | PASS |
| ● | 11.5 Inspect idlers for signs of leaks | PASS |
| ● | 11.6 Inspect sprocket segments condition | PASS |
| ● | 11.7 Inspect track frame for cracks, lose or missing hardware | PASS |

PM FRAME AND BODY

- | | |
|---|------|
| ● 12.1 Check panels for damage and security | PASS |
| ● 12.2 Check access steps and walkway condition | PASS |
| ● 12.3 Inspect boom condition – cracks, missing clamps, damaged pipes, excessive movement, lubrication | PASS |
| ● 12.4 Inspect stick condition – cracks, missing clamps, damaged pipes, excessive movement, lubrication | PASS |
| ● 12.5 Inspect quick hitch condition and operation | PASS |
| ● 12.6 Inspect bucket condition – cracks, wear, damage, mounts | PASS |
| ● 12.7 Inspect GET condition and hardware | PASS |

PM ELECTRICAL SYSTEM

- | | |
|--|------|
| ● 13.1 Check battery condition | PASS |
| ● 13.2 Check battery terminal condition | PASS |
| ● 13.3 Check battery security | PASS |
| ● 13.4 Check battery box drain is clear | PASS |
| ● 13.5 Check wiring condition and security | PASS |

PM GREASE SYSTEM

- | | |
|--|------|
| ● 14.1 Check all points for acceptable lubrication | PASS |
| ● 14.2 Inspect grease system operation | PASS |
| ● 14.3 Check grease line condition | PASS |

| | | |
|-----------------------------------|--|------|
| ● | 14.4 Refill grease tank | N/A |
| ● | 14.5 Lubricate bucket linkage | PASS |
| ● | 14.6 Lubricate blade linkage | PASS |
| ● | 14.7 Lubricate boom & stick linkage | PASS |
| ● | 14.8 Lubricate swing bearing | PASS |
| PM OPERATOR STATION | | |
| ● | 15.1 Check all doors for correct opening and closing adjustments and operation | PASS |
| ● | 15.2 Inspect condition of door seals | PASS |
| ● | 15.3 Check window glass and seal condition | PASS |
| ● | 15.4 Check mirror condition and adjustments | PASS |
| ● | 15.5 Fill window washer reservoir | PASS |
| ● | 15.6 Inspect air con vents condition | PASS |
| ● | 15.7 Inspect seat belt and mounting hardware | PASS |
| ● | 15.8 Inspect seat condition, operation and mounting | PASS |
| ● | 15.9 Replace cabin A/C filter | N/A |
| OIL SAMPLING | | |
| ● | 16.1 Engine | PASS |
| PM POST SERVICE INSPECTION CHECKS | | |
| ● | 17.1 All inspections have been completed and rectified as required | PASS |

| | | |
|--------------------|--|-----------|
| ● | 17.2 All safety related defects have been repaired or reported | PASS |
| ● | 17.3 All defects have been noted and reported | PASS |
| ● | 17.4 All fluids are at correct level and drain plugs tight | PASS |
| ● | 17.5 All oil samples have visually been inspected and any notable signs of contamination have been reported | PASS |
| ● | 17.6 All replaced filters have been cut and inspected and photos added to CAT Inspect and reported to supervisor | PASS |
| ● | 17.7 Machine has been recommissioned and ready for operation | PASS |
| ● | 17.8 PM service notification marked off in Vision Link | COMPLETED |
| DEFECTS IDENTIFIED | | |
| ● | 18.1 DEFECTS IDENTIFIED | PASS |